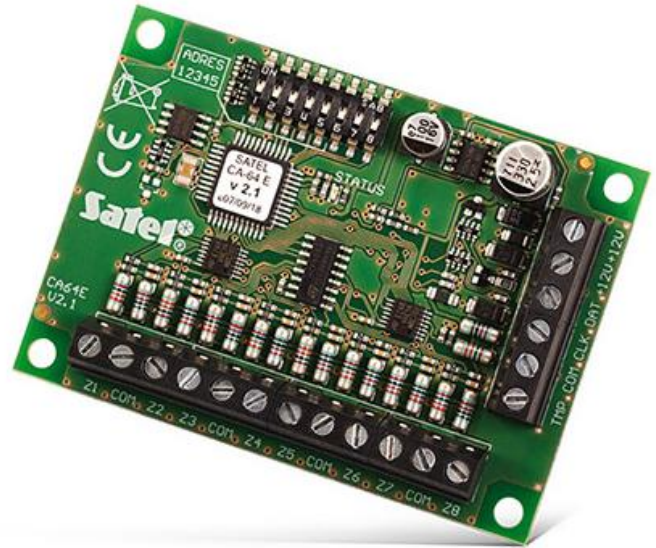


CA-64 E

ZONE EXPANSION MODULE

This module is dedicated for **INTEGRA** and **VERSA** control panels. It offers system extension with 8 wired inputs operating NO, NC, EOL and 2EOL configurations. Thanks to analysing the signals from inputs, it is possible to directly connect rollerblinds detectors and vibration detectors. The additional anti-sabotage input facilitates detection of unauthorised opening of the enclosure in which the module is fitted.

- system expansion with 8 zones
- support for NO, NC, EOL, 2EOL/NO, 2EOL/NC zone configurations
- programmable EOL resistance value
- pulse analysis with sensitivity setting for vibration and roller shutter sensors



TECHNICAL DATA

Supply voltage	12 V DC
Board dimensions	80 x 57 mm
Operating temperature range	-10...+55 °C
Standby mode current consumption	70 mA
Max. current consumption	70 mA
Weight	47 g
Maximum humidity	93 ±3%
Environmental class according to EN50130-5	II
Complied with standards	EN 50130-4, EN 50130-5, EN 50131-1, EN 50131-3
Security grade according to EN50131-2-6	Grade 3
Number of programmable zones	8

